

"Jesus Of Suburbia"

Green Day (Tre Cool)

Part I - Jesus Of Suburbia

1 + 2 + 3 + 4 + 1 + 2 + 3 + 4 + 1 + 2 + 3 + 4 + 1 + 2 + 3 + 4 +

RLRL L

(Half Open Hi-Hats)

1 + 2 + 3 + 4 + 1 + 2 + 3 + 4 + 1 + 2 + 3 + 4 + 1 + 2 + 3 + 4 +

RLRL

1 + 2 + 3 + 4 + 1 + 2 + 3 + 4 + 1 + 2 + 3 + 4 + 1 + 2 + 3 + 4 +

RLRL L

(Half Open Hi-Hats)

1 + 2 + 3 + 4 + 1 + 2 + 3 + 4 + 1 + 2 + 3 + 4 + 1 + 2 + 3 e + a 4 e + a

RLRLRLRL

(Crash Cymbal - Left Hand Plays Crash on + of Beat 4)

1 2 a 3 + 4 + 1 2 a 3 + 4 + 1 2 a 3 + 4 + 1 2 a 3 + 4 +

L L

1 2 a 3 + 4 + 1 + 2 + 3 + 4 +

L

(Half Open Hi-Hats)

1 + 2 + 3 + 4 + 1 + 2 + 3 + 4 + 1 + 2 + 3 + 4 + 1 + 2 + 3 + 4 +

RLRL

1 + 2 + 3 + 4 + 1 + 2 + 3 + 4 + 1 + 2 + 3 + 4 + 1 + 2 + 3 + 4 +

RLRL L

(Half Open Hi-Hats)

1 + 2 + 3 + 4 + 1 + 2 + 3 + 4 + 1 + 2 + 3 + 4 + 1 + 2 + 3 + 4 +

RLRL

1 + 2 + 3 + 4 + 1 + 2 + 3 + 4 + 1 + 2 + 3 + 4 + 1 + 2 + 3 + 4 +

RLRL L

(Half Open Hi-Hats)

1 + 2 + 3 + 4 + 1 + 2 + 3 + 4 + 1 + 2 + 3 + 4 + 1 + 2 + 3 e + a 4 e + a

RLRLRLRL

(Crash Cymbal - Left Hand Plays Crash on + of Beat 4)

1 2 a 3 + 4 + 1 2 a 3 + 4 + 1 2 a 3 + 4 + 1 2 a 3 + 4 +

L L

1 2 a 3 + 4 + 1 + 2 + 3 + 4 +

L

(Half Open Hi-Hats)

1 + 2 + 3 + 4 + 1 + 2 + 3 + 4 + 1 + 2 + 3 + 4 + 1 + 2 + 3 + 4 +

Drum Solo

1 + 2 + 3 4 1 + 2 + 3 + 4 +

R L R L R L R L R L R L

1 + 2 + 3 4 1 + 2 + 3 + 4 +

R L R L L R L R L R L R L

(Half Open Hi-Hats)

1 + 2 + 3 + 4 + 1 + 2 + 3 + 4 + 1 + 2 + 3 + 4 + 1 + 2 + 3 + 4 +

1 + 2 + 3 4 1 + a 2 e + a 3 e + a 4 e + a

R L R L R L R L R L R L R L

1 + 2 + 3 4 1 + a 2 e + a 3 + 4 +

R L R L R R L R L R L R L R L R L

1 + 2 + 3 4 1 + 2 + 3 4

Part II - City Of The Damned (Tempo drops by half)**(Closed Hi-Hats)**

1 + a 2 + a 3 e + a 4 + a 1 + a 2 + a 3 e + a 4 + a

(Closed Hi-Hats)

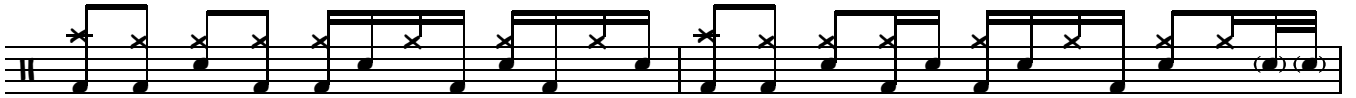
1 e + a 2 + a 3 e + a 4 + a 1 + a 2 + a 3 e + a 4 + a



(Half Open Hi-Hats)

1 + 2 + 3 e + a 4 e + a 1 + 2 + a 3 e + a 4 + a

R L



(Closed Hi-Hats)

1 e + a 2 + a 3 e + a 4 + a 1 + a 2 + a 3 e + a 4 + a

R L



(Half Open Hi-Hats)

1 + 2 + 3 e + a 4 + a 1 + 2 + 3 e + a 4 e +

R L



(Crash Cymbal)

1 e + a 2 + a 3 e + a 4 + a 1 e + a 2 + a 3 e + a 4 e + a

R L



(Half Open Hi-Hats)

1 + 2 + a 3 + 4 + a 1 e + a 2 + a 3 e + a 4 e + a



(Crash Cymbal)

1 e + a 2 + a 3 e + a 4 + a 1 e + a 2 + a 3 e + a 4 e + a

R L



(Half Open Hi-Hats)

1 + 2 + 3 + 4 + 1 e + a 2 + a 3 e + a 4 e + a



L R L R R L R L

(Closed Hi-Hats)

1 e + a 2 + a 3 e + a 4 + a 1 + a 2 + a 3 e + a 4 +

**(Half Open Hi-Hats)**

1 + 2 + 3 e + a 4 e + a 1 + 2 + a 3 e + a 4 e + a

**(Closed Hi-Hats)**

1 e + a 2 + a 3 e + a 4 + a 1 + a 2 + a 3 e + a 4 + a



R L

(Half Open Hi-Hats)

1 + 2 + 3 e + a 4 + a 1 + 2 + a 3 e + a 4 e + a



R L

(Crash Cymbal)

1 e + a 2 + a 3 e + a 4 + a 1 e + a 2 + a 3 e + a 4 e + a



R L

(Half Open Hi-Hats)

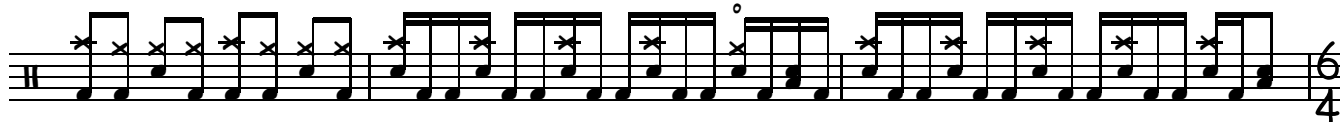
1 + 2 + a 3 + 4 + a 1 e + a 2 + a 3 e + a 4 e + a

**(Crash Cymbal)**

1 e + a 2 + a 3 e + a 4 + a 1 e + a 2 + a 3 e + a 4 e + a

**(Half Open Hi-Hats)**

1 + 2 + 3 + 4 + 1 e + a 2 e + a 3 e + a 4 e + a 1 e + a 2 e + a 3 e + a 4 e +

6
4

Part III - I Don't Care (Six Beats to a Bar)
(Half Open Hi-Hats)

1 + 2 + 3 4 5 6 1 + 2 + 3 4 5 6

1 + 2 + 3 4 5 6 1 + 2 + 3 4 5 6

L R L R L R L R

1 + 2 + 3 4 5 6 1 + 2 + 3 4 5 6

L L

1 + 2 + 3 4 5 6 1 + 2 + 3 4 5 6

L R L R L R L R

1 + 2 + 3 4 5 6 1 + 2 + 3 4 5 6

L L

1 + 2 + 3 4 5 6 1 + 2 + 3 4 5 6

R L R L R L R L R

1 + 2 + 3 4 5 6 1 + 2 + 3 4 5 6

L L

1 + 2 + 3 4 5 6 1 + 2 + 3 4 5 6

R L R L R L R L R

1 + 2 + 3 4 5 6 1 + 2 + 3 4 5 6

R L R L R L R L R

(Crash Cymbal)

1 + 2 + 3 + 4 + 1 + 2 + 3 4 1 + 2 + 3 + 4 + 1 + 2 + 3 4

RLRLRL

(Closed Hi-Hats)

1 + 2 + 3 + 4 + 1 + 2 + 3 4 1 + 2 + 3 + 4 + 1 + 2 + 3 4

RLRLRL

(Heavy Crash/China Cymbal)

1 + 2 + 3 + 4 + 1 + 2 + 3 4 1 + 2 + 3 + 4 + 1 + 2 + 3 4

1 + 2 + 3 + 4 + 1 + 2 + 3 4 1 + 2 + 3 + 4 + 1 + 2 + 3 4

R L R L R L R

(Half Open Hi-Hats)

1 + 2 + 3 + 4 + 1 + 2 + 3 4 1 + 2 + 3 + 4 + 1 + 2 + 3 4

1 + 2 + 3 + 4 + 1 + 2 + 3 4 1 + 2 + 3 + 4 + 1 + 2 + 3 4

1 2 3 4 1 2 3 4

R L R

Part IV - Dearly Beloved

1 2 3 4 1 2 3 4 1 2 3 4 1 2 3 4 +

L

1 2 3 4 1 2 3 4 + 1 2 3 4 1 2 3 4 +

1 2 3 4 1 2 3 4 + 1 2 3 4 + 1 2 3 4 +

1 2 3 4 1 2 3 + 4 + 1 2 3 4 1 2 3 + 4 +

1 2 3 4 1 2 3 + 4 + 1 2 3 4 1 2 3 + 4 +

1 2 3 4 1 2 3 + 4 + 1 2 3 4 1 2 3 + 4 +

1 2 3 4 1 2 3 + 4 + 1 2 3 4 1 2 3 + 4 +

1 2 3 4 1 2 3 + 4 + 1 2 3 4 1 2 3 + 4 +

1 2 3 4 1 2 3 + 4 + 1 2 3 4 1 2 3 + 4 +

1 2 3 4 1 2 3 + 4 + 1 2 3 4 1 2 3 + 4 +

1 2 3 4 1 2 3 + 4 + 1 2 3 4 1 2 3 + 4 +

1 2 3 4 1 2 3 + 4 + 1 2 3 4 1 2 3 + 4 +

1 2 3 4 1 2 3 + 4 + 1 2 3 4 1 2 3 + 4 +

Part V - Tales From Another Broken Home

1 2 3 4 1 2 3 4 1 2 3 4 1 2 3 4

1 2 3 4 1 2 3 4 1 2 3 4 1 2 3 4

Part V - Tales From Another Broken Home Continued (Tempo Doubles)

(Crash Cymbal)

1 e + a 2 + a 3 e + 4 + 1 e + a 2 + a 3 e + 4 + 1 e + a 2 + a 3 e + 4 + 1 e + a 2 + a 3 e + 4 +

1 e + a 2 + a 3 e + 4 + 1 e + a 2 + a 3 e + 4 +

1 e + a 2 + a 3 e + 4 + 1 e + a 2 + a 3 e + a 4 e + a

1 + a 2 e + 3 e a 4 e + a 1 + a 2 e + 3 e a 4 e + a

R L R L R L R L R L R L R L R L R L R L

1 + a 2 e + 3 e a 4 e + a 1 + a 2 e + 3 e a 4 e +

R L R L R L R L R L R L R L R L R L R L

1 e + a 2 + a 3 e + 4 + 1 e + a 2 + a 3 e + 4 + 1 e + a 2 + a 3 e + 4 + 1 e + a 2 + a 3 e + 4 +

1 e + a 2 + a 3 e + 4 + 1 e + a 2 + a 3 e + 4 +

1 e + a 2 + a 3 e + 4 + 1 e + a 2 + a 3 e + a 4 e + a

R L R L R L R L R L R L R L R L R L R L

1 + a 2 e + 3 e a 4 e + a 1 + a 2 e + 3 e a 4 e + a

R L R L R L R L R L R L R L R L R L R L

1 + a 2 e + 3 e a 4 e + a 1 + a 2 e + 3 e a 4 e + a

R L R L R L R L R L R L R L R L R L R L

1 + a 2 e + 3 e a 4 e + a 1 + a 2 e + 3 e a 4 e + a ¹¹

R L R L R L R L R L R L R L R L R L R L

1 2 3 4 1 2 3 4 1 2 3 4 1 2 3 4

1 e + a 2 + a 3 e + 4 + 1 e + a 2 + a 3 e + 4 + 1 e + a 2 + a 3 e + 4 + 1 e + a 2 + a 3 e + 4 +

1 e + a 2 + a 3 e + 4 + 1 e + a 2 + a 3 e + 4 +

1 e + a 2 + a 3 e + 4 + 1 e + a 2 + a 3 e + a 4 e + a

R L R L

1 + a 2 e + 3 e a 4 e + a 1 + a 2 e + 3 e a 4 e + a

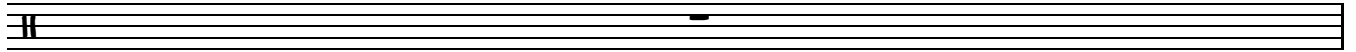
R L R L R L R L R L R L R L R L R L R L

1 + a 2 e + 3 e a 4 e + a 1 + a 2 e + 3 e a 4 e +

R L R L R L R L R L R L R L R L

Piano Break (17 Bars long - 2x8 + 1)

(Piano stops on Bar 6)



1 e+a2+a3e+4+ 1 e+a2+a3e+4+ 1 e+a2+a3e+4+ 1 e+a2+a3e+4+

1 e + a 2 e + a 3 e + a 4 +

R L R L R L R L R L R L

1 e + a 2 e + a 3 e + a 4 +

R L R L R L R L R L R L R L R L R L R L

