

"Kayleigh"

Marillion (Ian Mosley)

Tempo: ♩ = 105 Bpm

Intro (Closed Hi-Hat) - Drums enter @ 0:08

1+2+3+a4+ 1+2+3+4+a 1+2+3+4+ 1+2+3+4+ 1+2+3+a4e+

RLR

1+2+3+4e+ 1+2+3+4+ 1+2+3+4+ 1+2+3+4e+

Verse 1 (Closed Hi-Hat)

1+2+3+4e+ 1+2+3+4+ 1+2+3+4+ 1+2+3+a4e+

1+2+3+4e+ 1+2+3+4+ 1+2+3+4+ 1+2+3+4e+

1+2+3+4e+ 1+2+3+4+ 1+2+3+4+ 1+2+3+a4e+

1+2+3+4+ 1+2+3+4e+ 1+2+3+4+ 1+2+3+a4+

Chorus 1 (Ride Cymbal)

1+2+3+4+ 1+2+3+4+ 1+2+3+4+ 1+a2+3+a4e+

1+2+3+4+ 1+2+3+4+a 1+2+3+4+ 1+a2+3+a4e+

1+2+3+4+ 1+2+3+4+a 1+2+3+4+ 1+a2+3+a4e+

1+2+3+4+a 1+2+3+4+ 1+2+3+4+ 1+2+3e+a4e+

RLRLRLR

"Kayleigh"

Marillion (Ian Mosley)

Guitar Solo 1 (Ride Cymbal)

1 + 2 + 3 + 4 + 1 + 2 + 3 + 4 + 1 + 2 + 3 + 4 + a 1 + 2 + 3 + 4 +

1 + 2 + 3 + 4 + a 1 + 2 + 3 + 4 + 1 + 2 + 3 + 4 + a 1 + 2 + 3 + 4 +

1 + 2 + 3 + 4 + a 1 + 2 + 3 + 4 + 1 + 2 + 3 + 4 + 1 + 2 + 3 + 4 +

Detailed description: This section contains three staves of musical notation for a ride cymbal solo. Each staff begins with a set of rhythmic counts above the notes. The first staff has counts: 1 + 2 + 3 + 4 +, 1 + 2 + 3 + 4 +, 1 + 2 + 3 + 4 + a, 1 + 2 + 3 + 4 +. The second staff has counts: 1 + 2 + 3 + 4 + a, 1 + 2 + 3 + 4 +, 1 + 2 + 3 + 4 + a, 1 + 2 + 3 + 4 +. The third staff has counts: 1 + 2 + 3 + 4 + a, 1 + 2 + 3 + 4 +, 1 + 2 + 3 + 4 +, 1 + 2 + 3 + 4 +. The notation consists of rhythmic patterns of eighth and sixteenth notes on a single staff, with 'x' marks indicating cymbal hits.

Bridge 1 (Closed Hi-Hat)

1 + 2 + 3 + 4 + 1 + 2 + 3 + 4 + 1 + 2 + 3 e + 4 + 1 + 2 + 3 + a 4 e +

Detailed description: This section contains one staff of musical notation for a closed hi-hat bridge. The counts above the notes are: 1 + 2 + 3 + 4 +, 1 + 2 + 3 + 4 +, 1 + 2 + 3 e + 4 +, 1 + 2 + 3 + a 4 e +. The notation shows rhythmic patterns of eighth and sixteenth notes with 'x' marks indicating hi-hat hits.

Verse 2 (Closed Hi-Hat)

1 + 2 + 3 + 4 + a 1 + 2 + 3 + 4 + 1 + 2 + 3 + 4 + 1 + 2 + 3 + a 4 e +

1 + 2 + 3 + 4 + a 1 + 2 + 3 + 4 + 1 + 2 + 3 + 4 + 1 + 2 + 3 + 4 e +

1 + 2 + 3 + 4 e + 1 + 2 + 3 + 4 + 1 + 2 + 3 + 4 + 1 + 2 + 3 + a 4 e +

1 + 2 + 3 + 4 e + 1 + 2 + 3 + 4 + 1 + 2 + 3 + 4 + 1 + 2 + 3 + a 4 +

Detailed description: This section contains four staves of musical notation for a closed hi-hat verse. Each staff begins with a set of rhythmic counts above the notes. The first staff has counts: 1 + 2 + 3 + 4 + a, 1 + 2 + 3 + 4 +, 1 + 2 + 3 + 4 +, 1 + 2 + 3 + a 4 e +. The second staff has counts: 1 + 2 + 3 + 4 + a, 1 + 2 + 3 + 4 +, 1 + 2 + 3 + 4 +, 1 + 2 + 3 + 4 e +. The third staff has counts: 1 + 2 + 3 + 4 e +, 1 + 2 + 3 + 4 +, 1 + 2 + 3 + 4 +, 1 + 2 + 3 + a 4 e +. The fourth staff has counts: 1 + 2 + 3 + 4 e +, 1 + 2 + 3 + 4 +, 1 + 2 + 3 + 4 +, 1 + 2 + 3 + a 4 +. The notation shows rhythmic patterns of eighth and sixteenth notes with 'x' marks indicating hi-hat hits.

Chorus 2 (Ride Cymbal)

1 + 2 + 3 + 4 + 1 + 2 + 3 + 4 + 1 + 2 + 3 + 4 + 1 + a 2 + 3 + a 4 e +

1 + 2 + 3 + 4 + 1 + 2 + 3 + 4 + 1 + 2 + 3 + 4 + 1 + a 2 + 3 e + a 4 +

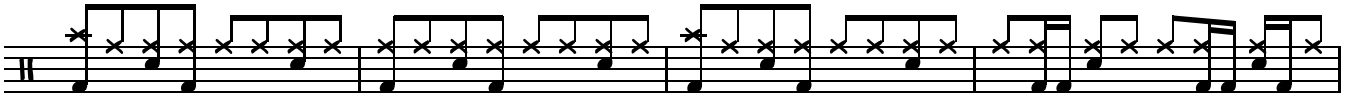
Detailed description: This section contains two staves of musical notation for a ride cymbal chorus. Each staff begins with a set of rhythmic counts above the notes. The first staff has counts: 1 + 2 + 3 + 4 +, 1 + 2 + 3 + 4 +, 1 + 2 + 3 + 4 +, 1 + a 2 + 3 + a 4 e +. The second staff has counts: 1 + 2 + 3 + 4 +, 1 + 2 + 3 + 4 +, 1 + 2 + 3 + 4 +, 1 + a 2 + 3 e + a 4 +. The notation shows rhythmic patterns of eighth and sixteenth notes with 'x' marks indicating cymbal hits.

"Kayleigh"

Marillion (Ian Mosley)

Chorus 2 Cont. (Ride Cymbal)

1 + 2 + 3 + 4 + 1 + 2 + 3 + 4 + 1 + 2 + 3 + 4 + 1 + a 2 + 3 + a 4 e +



1 + 2 + 3 + 4 + a 1 + 2 + 3 + 4 + 1 + 2 + 3 + 4 +

