

"Gotta Be Somebody"

Nickelback (Daniel Adair)

Tempo: ♩ = 115 Bpm

Verse

Chorus

R R L L R L R L

RLRLRL

Verse

L R L R

R R L L R L R L

Chorus

Musical notation for the Chorus section, consisting of four staves of music. The notation includes rhythmic patterns with accents (>) and asterisks (*). The first staff has a pattern of eighth notes with accents. The second staff has a similar pattern but with a different rhythmic grouping. The third staff has a pattern of eighth notes with accents. The fourth staff has a pattern of eighth notes with accents. The notation is written on a grand staff with a treble clef and a common time signature.

RLRLRL

R

Drum Solo

Musical notation for the Drum Solo section, consisting of four staves of music. The notation includes rhythmic patterns with asterisks (*). The first staff has a pattern of eighth notes with asterisks. The second staff has a similar pattern but with a different rhythmic grouping. The third staff has a pattern of eighth notes with asterisks. The fourth staff has a pattern of eighth notes with asterisks. The notation is written on a grand staff with a treble clef and a common time signature.

R L R R L R

R L R L R L L R L R L

R/L R/L L R R R L R L

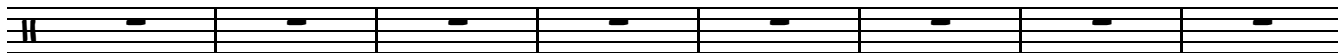
R L R R L R L

Chorus

Musical notation for the Chorus section, consisting of two staves of music. The notation includes rhythmic patterns with accents (>) and asterisks (*). The first staff has a pattern of eighth notes with accents. The second staff has a similar pattern but with a different rhythmic grouping. The notation is written on a grand staff with a treble clef and a common time signature.

R

Break



Chorus

